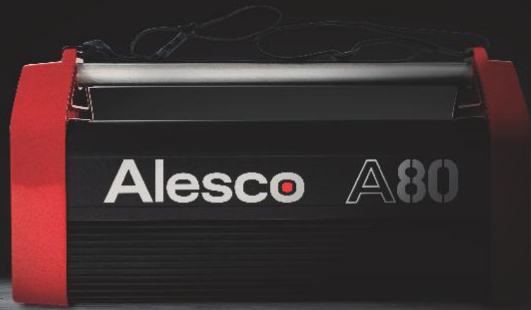
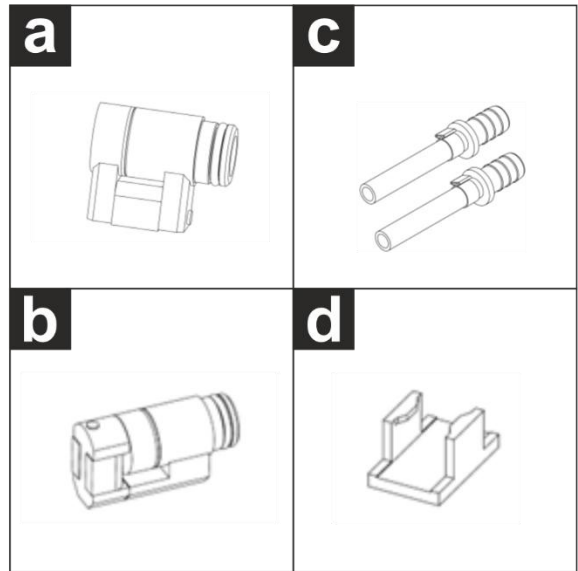
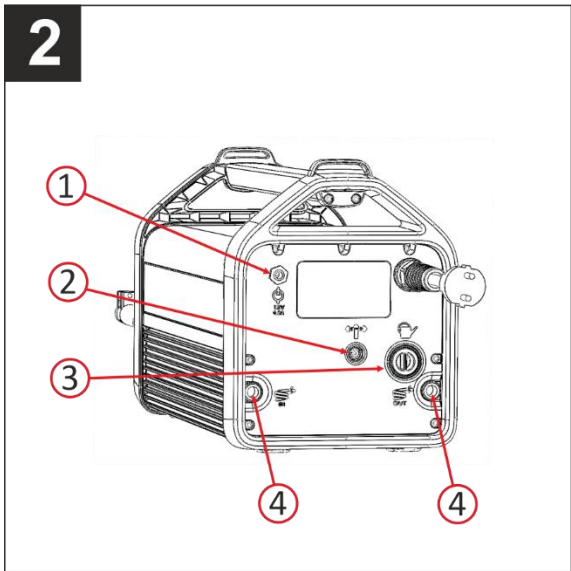
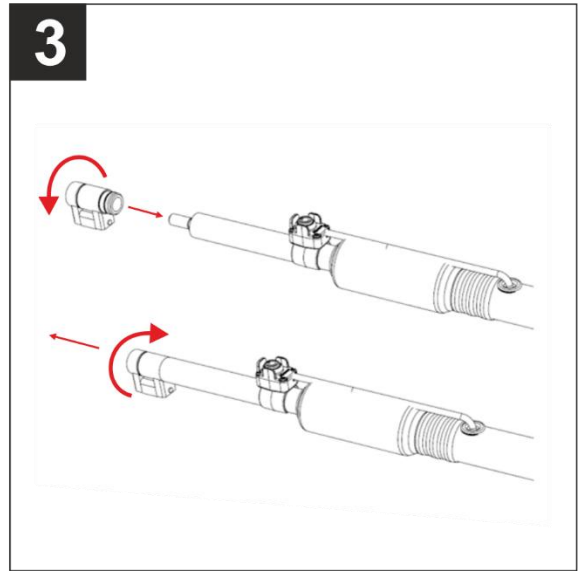
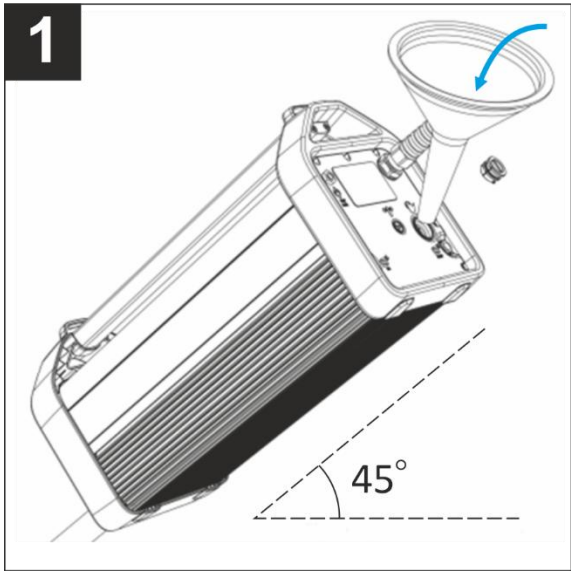


# USER MANUAL

**Alesco**<sup>®</sup>  
INDUCTION HEATER





4



7



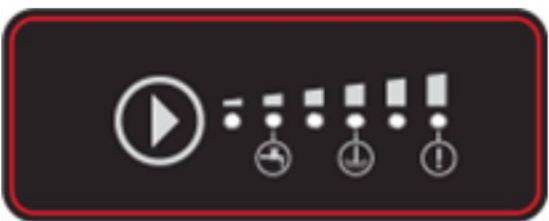
5



8



6



9



# ENGLISH

## CONGRATULATIONS

to the purchase of your new professional induction heater. The induction heater is part of a series of professional heaters from Alesco International AB and represents the latest technology in induction heating.

## UNPACKING

Check the machine and the hose package, cables, transformer, and inductor for visible damage. If anything is missing or damaged, contact your reseller or Alesco International AB directly.

## START-UP



**Important!** Always read the safety instructions and follow the guidelines carefully before using the Alesco A80.



**Important!** It is the owner's responsibility to ensure that the equipment has been installed according to the instructions in this manual. It is the owner's responsibility to guarantee that the induction heater, before being used, has been inspected in accordance with applicable regulations.



**Important!** If the induction heater is used in environments where the temperature is below freezing, an antifreeze solution must be used. The recommended antifreeze is 30% propylene glycol.



**Important!** Do not fill the water tank with anything other than water (and antifreeze when necessary). Improper handling may cause personal injury and/or damage to the induction heater.

Before the machine is started, it must be filled with cooling water. Upon delivery, there is already a glycol mixture in the tank, but this mixture is not sufficient for prolonged operation. To fill the water, open the cooling water tank lid and add distilled water or clean tap water up to the edge of the cooling tank when it is positioned at a 45-degree angle as shown in the image. Add at least 2 liters of cooling water.

See image 1

## INSTALLATION

Alesco A80 is intended for industrial environments. Class A equipment.

Mains voltage: 208 - 230VAC, 50-60Hz + PE

Upon delivery, the equipment is ready to be connected to the mains voltage. **Read this manual before connecting the equipment to the mains!** To access the manual digitally, visit our website [www.alesco.se](http://www.alesco.se) and download it from there.

## STANDARD



SS-EN 60335-1

## CONNECTION



**Important!** The machine may only be connected to properly grounded electrical outlets.



**Important!** The machine must only be connected to electrical outlets protected by a 30mA residual-current device (RCD).

Connect the induction heater to the wall outlet. The cooling water pump will start, and the LEDs will indicate with a steady green light when the induction heater is connected and ready for use. The machine starts in level 4, with four green LEDs illuminated. **See image 5**

## EFFECT

The power of the induction heater can be adjusted by pressing the power button. The power setting is reset when the mains cable is disconnected.



## USE



**Warning!** The machine is intended for professional use and requires trained operators.



**Warning!** The machine must not be used by children.



**Warning!** The induction heater is not intended to be used by persons with physical, sensory, or mental disabilities.



**Warning!** Do not use the machine above 4000 m. Maximum altitude: 4000 m above sea level.



**Warning!** Do not place the induction heater on uneven or unstable surfaces. The induction heater may tip over and cause personal injury or serious damage to the unit.



**Warning!** Do not touch any object that has been near the induction tip without first checking that the object has cooled down.



**Warning!** Do not touch the inductor when it is activated due to the strong magnetic field and heat. Risk of injury!



**Warning!** If the paint has not been removed before heating the workpiece, an exhaust fan should be used to remove the fumes.



**Warning!** Do not wear any metal objects on your body such as watches, jewelry, necklaces, etc., as there is a risk that they may be unintentionally heated during operation.



**Warning!** A person wearing a pacemaker or other medical device must never use or be in direct proximity to an active induction heater.



**Warning!** When the induction heater is in use, the work area must be cleared of flammable materials to prevent them from igniting.



**Warning!** Ensure that you know where the fire extinguishing equipment is located. Risk of injury.



**Warning!** Loose cables and hoses pose a tripping hazard. Risk of injury.

Before you start using your induction heater, make sure to wear protective gloves and safety glasses. **See image 4.** When you press the control button, the LED will start flashing white to indicate that the induction heater is running and heating. **See image 6**

## OVERHEATING

Remember not to overheat the workpiece. Excessive heating can reduce the lifespan of the inductor. The heating process must not damage or melt the workpiece.

## EXTRA COOLING

If you need to extend the working time or cool down the internal water tank, use the supplied hose connections and connect one to a water tap and the other to a drain. **See image 2.**

## FILL THE WATER TANK

- Lift the machine to approximately 45 degrees.
- Open the tank lid.
- Use a funnel and fill up to the edge.
- Close the tank lid, and the machine is ready for use.

**See image 1**

**NOTE!** The induction heater uses glycol, and it must be recycled and replaced during refilling/draining.

## CHANGE OF INDUCTOR

The inductor wears out during use and can therefore be replaced when worn.

- Disconnect the connection cable.
- Open the pressure relief valve.
- Unscrew the inductor counterclockwise by hand.
- Check that the surfaces are clean and undamaged.
- Replace the O-ring (15,3x2,4) if necessary.
- Install the new inductor onto the handle clockwise by hand.

**See image 3**

## ERROR INDICATION

If the induction heater becomes too hot, the warning light will illuminate and the machine will stop heating. Use the additional water cooling system to cool down the machine. **See image 7**

If the water flow is obstructed or if the cooling water level in the tank is insufficient, the flow error warning light will illuminate. Check the water level and ensure that the hose package is not pinched or damaged. **See image 8**

If a general hardware error is indicated, disconnect the induction heater and reconnect it to reset. If the general hardware error persists, contact your reseller or Alesco International AB directly.

**See image 9**

## TECHNICAL DESCRIPTION

<b>Effect:</b>	3,7kW
<b>Equipment:</b>	Group 2 Klass A
<b>Frequency:</b>	15kHz - 40kHz
<b>Mains connection:</b>	208-230VAC, 50-60Hz
<b>Temperature:</b>	0°C to +40°C (with glycol in the cooling water.)
<b>IP rating:</b>	21
<b>Weight:</b>	12-16kg
<b>Dimensions:</b>	135x30x50mm
<b>Water tank:</b>	6 liters
<b>Hose package:</b>	1,7m or 3,0m
<b>Max pressure:</b>	2,000e5/2 Bar
<b>Accessory connection:</b>	12V/0,5A

## WARNINGS AND IMPORTANT INFORMATION



**Important!** Use only accessories and spare parts approved by Alesco International AB.



**Important!** If the supplied extra water hoses are replaced, make sure not to reuse old ones.



**Important!** The induction heater is designed with a high degree of recyclability. Despite this, it may contain substances that should not be disposed of in regular waste. Contact Alesco International AB for information on environmentally safe handling.



**Important!** The equipment or its parts must not be modified without prior written permission from the manufacturer. The user of the equipment is responsible for any technical faults resulting from incorrect use, improper maintenance, damage, incorrect repair, or modification by anyone other than the manufacturer or someone authorized by the manufacturer.



**Important!** If the machine can be connected to a network with suspected overvoltage, it is recommended to use a surge protector with similar specifications according to: NM transient response time 1 ns common mode, normal mode rejection 45 dB, peak current 15 kA normal mode, transient energy 680 J. This is to meet immunity against overvoltage according to IEC 61000-4-5.



**Warning!** All major service and maintenance work must be carried out by Alesco International AB's service personnel. Risk of electric shock.



**Warning!** Do not remove any covers or perform any work on the induction heater without disconnecting it from the wall outlet. Risk of electric shock.



**Warning!** If the power cord is damaged, it must be replaced by the manufacturer, its service agent, or a similarly qualified person to avoid danger.



**Warning!** Disconnect the induction heater from the wall outlet before performing service, cleaning, or maintenance. Risk of electric shock.

## WARRANTY

Alesco International AB provides a 24-month warranty on Alesco induction heaters, valid from the date of delivery. The warranty covers damage caused by defects in materials or manufacturing. The warranty does not cover damage resulting from improper or careless use, overloading, negligent maintenance, or normal wear and tear. **The warranty does not cover the hose package or the inductor.**

### The warranty requires that:

- Alesco 80 is correctly installed and inspected in accordance with applicable local regulations.
- Alesco 80 has not been modified or rebuilt without approval from Alesco International AB.
- Only original parts from Alesco International AB have been used for repairs.
- Use and maintenance have been carried out in accordance with the instructions in this manual.

## WARRANTY CLAIMS

In the event of a warranty claim towards Alesco International AB, the customer must be able to prove that the fault occurred within the warranty period and that the Alesco 80 has been used according to the given instructions and technical data. The warranty claim must also include information about the product type and the machine serial number.

## SUPPORT

Alesco International AB has a professional customer support: [www.alesco.se](http://www.alesco.se). For latest updated manual, visit [www.alesco.se](http://www.alesco.se).

Send e-mail: [support@alesco.se](mailto:support@alesco.se), contact by phone: +46317114750.

Send mail: Alesco International AB, Neongatan 10, SE-43153 Mölndal SVERIGE

This manual, in its updated form, can be downloaded from Alesco's product website: [www.alesco.se](http://www.alesco.se)

MÖLNDAL, SWEDEN 2025-05-14



Bo Ehrenpohl, CEO  
Alesco International AB



Alesco International AB, Neongatan 10 SE-43153 Mölndal, Sweden

---

**Alesco**<sup>®</sup>